

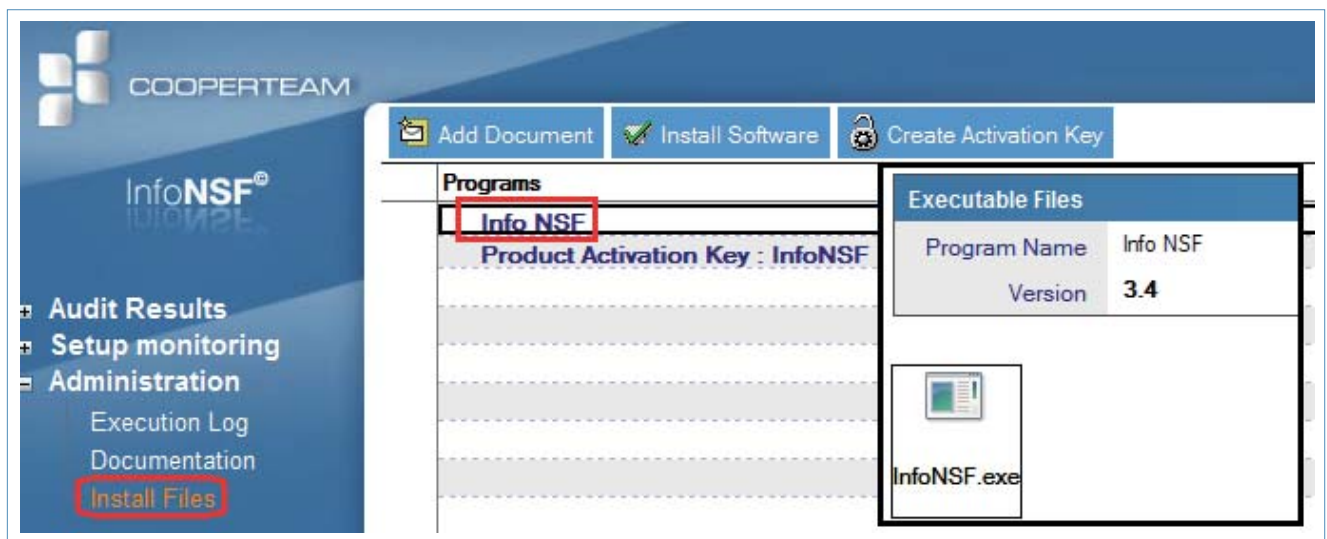
Three step install guide :

- Steps 1 & 2 :** installation and configuration
- Step 3 :** identification and segmentation

STEP 1 Dashboard Collector : Info NSF™

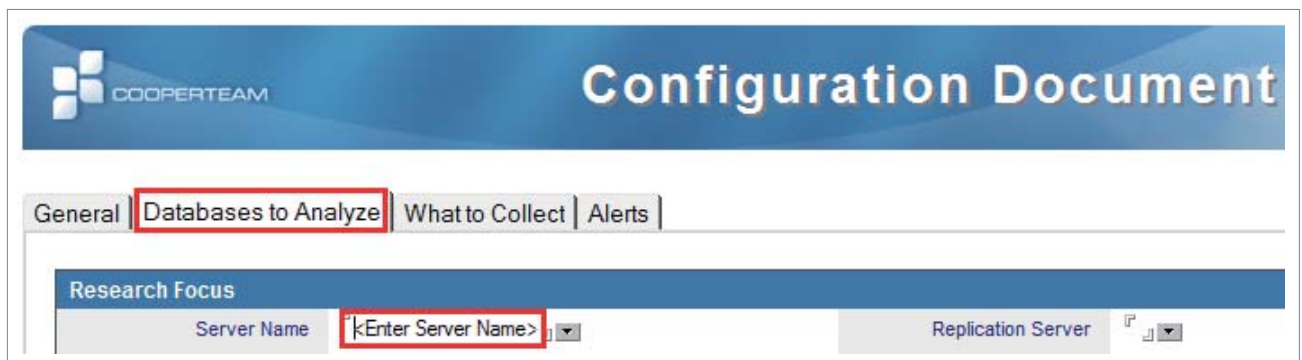
1.1 Installation

- 1 – Download Info NSF™ from Cooperteam FTP site : [click here](#)
- 2 – Unzip the package and move the database into your local Notes Data folder
- 3 – Sign the database using your current Notes ID
- 4 – Create a new copy of the InfoNSF.nsf database on a Domino server or keep it in your local Notes Data folder *(for a quick test)*
- 5 – Modify the ACL *(users don't need access to the database)*
- 6 – Open the local Info NSF™ database, go to Administration → Install Files → Open the document
- 7 – Save the binary InfoNSF.exe on your local Notes Program Folder. If you created a copy of the database on the Domino Server, save the binary into the Program Folder of the Domino Server
- 8 – Modify the document « Product Evaluation Key » to add your evaluation key



- ➔ Read the document « Setup Document » from the documentation

1.2 Configuration



- ➔ Create a new Setup document *(or modify the above sample)* and define the mandatory fields like the "Alias" name, used in the command line to start the Info NSF™ process.

Run Info NSF™ to audit your Notes databases

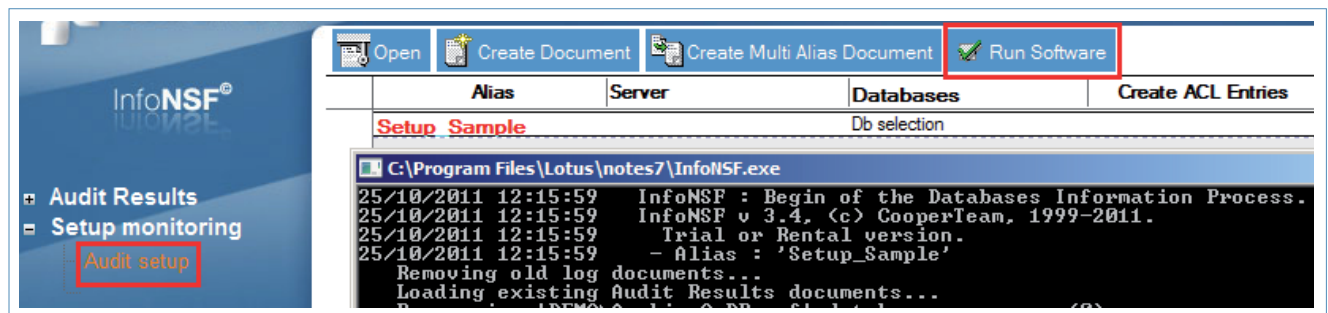
1.3

Audit Setup

Info NSF™ can be used either from your local computer (*using a Notes ID that can access the target databases*) or directly from the server.

If you wish to audit from within your Notes Client :

- ➔ Use the « Install Software » button to save the binary in your local Notes Program folder



- ➔ Then select the Setup document and click on « Run Software »

If you wish to audit from a Domino Server :

- ➔ Copy the InfoNSF.exe saved locally (*Installation - point 7*) to the program folder of your Domino Server
- ➔ Create a Program document or run manually the following command from the Server console :

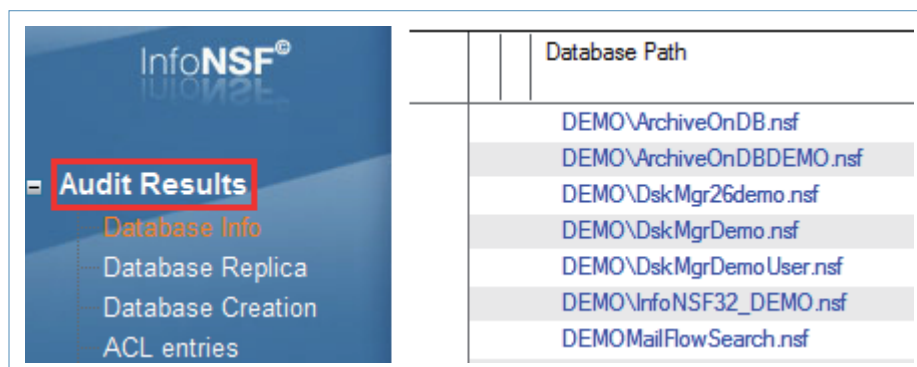
```
load infoNSF <path_to_InfoNSF_folder>\InfoNSF.nsf <Alias_name>
```

ie : Documentation « Using Info NSF »

What's Next ?

Once the above is done, you should see documents in the « Audit Results » views.

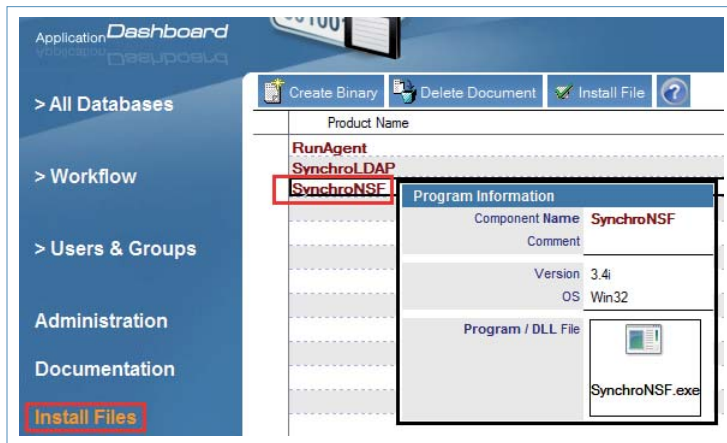
If so, you can continue to the next step.



Audit Results

STEP 2 Application Dashboard™

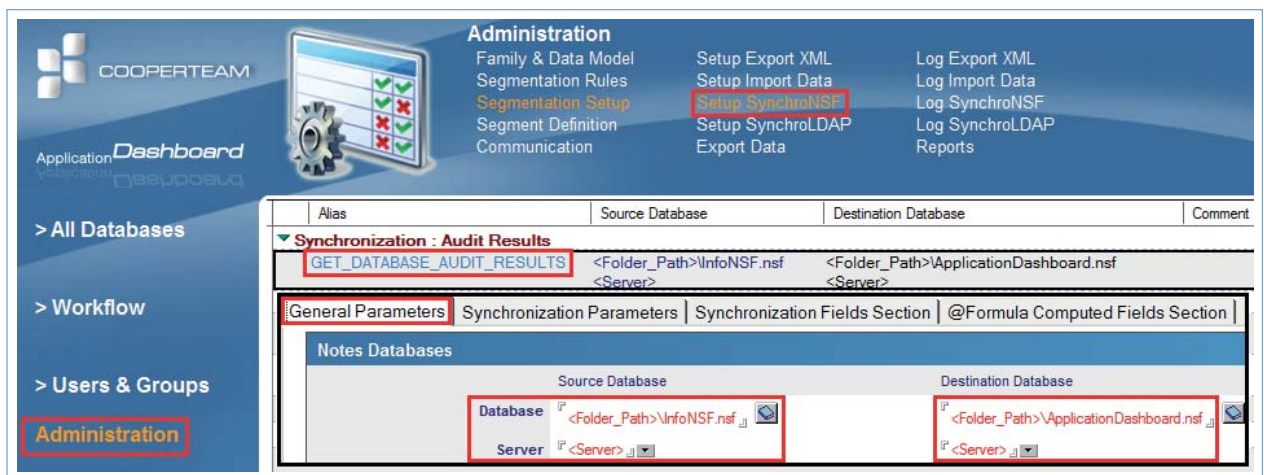
- 2.1 Installation**
- 1 – Download Application Dashboard™ from Cooperteam FTP site : [click here](#)
 - 2 – Unzip the package and move the database into your local Notes Data folder
 - 3 – Sign the database using your current Notes ID
 - 4 – Create a new copy of the ApplicationDashboard.nsf database on a Domino server or keep it on your local Notes Data Folder *(for a quick test)*
 - 5 – Modify the ACL *(users don't need access to the database)*
 - 6 – Open the local Application Dashboard™ database, go to « Install Files » view → Open the Synchro NSF™ document
 - 7 – Save the binary SynchroNSF.exe on your local Notes Program Folder. If you created a copy of the database on the Domino Server, save the binary into the Program Folder of the Domino Server.
 - 8 – **Modify the « Activation Key » document to add your evaluation key**



2.2 Configuration

The binary Synchro NSF™ is used to synchronize the Audit results documents from Info NSF™ into the Application Dashboard™ database *(this is why you have to run Info NSF™ first before using in a second stage the Application Dashboard™)*.

In order to configure the synchronization, you need to edit the red fields of the Setup document « GET_DATABASE_AUDIT_RESULTS » located into the Administration → Setup Synchro NSF™ view, as below :



Run Synchro NSF™ (to retrieve the Audit Results from Info NSF™ to the Application Dashboard™)

2.3 Synchro NSF™ can be used either from your local computer (using an Notes ID that can access the source and destination databases) or directly on the server.

If you wish to synchronize from your Notes Client :

- ➔ Use the « Install Software » button to save the binary in your local Notes Program folder

If you wish to synchronize from a Domino Server :

- ➔ Copy the SynchroNSF.exe saved locally (*Installation - point 7*) to the program folder of your Domino Server
- ➔ You need to create a Program document or run manually the following command from the Server console :

```
load synchroNSF <folder_path>\ApplicationDashboard.nsf GET_DATABASE_AUDIT_RESULTS
```

2.4 Configure Application Dashboard™ : You should complete the following steps prior using the product

2.4.1 Review the configuration documents from the Administration views

Review **Family & Data Model** documents : Family and Data Model documents will help you to define the major families based on a database filename path, template name, library footprint or even by a form usage footprint.

Review the **Segmentation Rules** documents : a segmentation rule determines the segment based on specific conditions

Review the **Segmentation Setup** documents : a segmentation Setup document allow to group several rules to identify easily standard, complex or out-of-scope Notes applications.

Review the **Segment Definiton** documents: a segment document describe a segment name and number

2.4.2 Run Automatic action to start identifying and segmenting well known databases

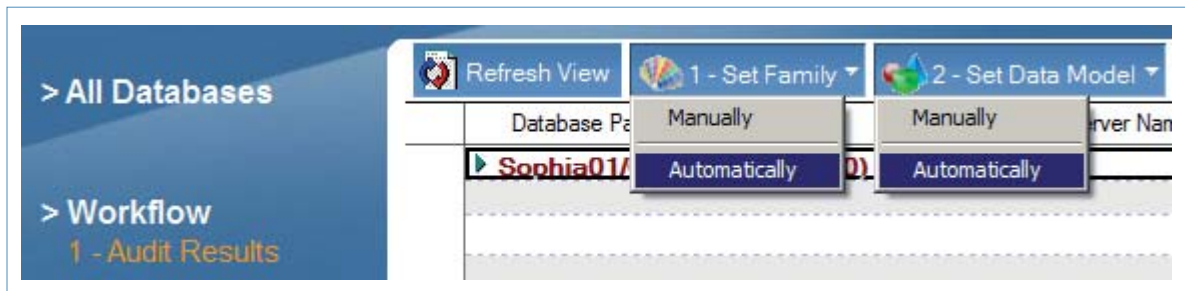
From the "1- Audit Results" view, one after the other, click on the 3 choices under the "Tools" button :

- ➔ Run Once : Build Library Footprint
- ➔ Run Once : Build Form Usage Footprint
- ➔ Run Once : Build ACL Role Footprint

... Run



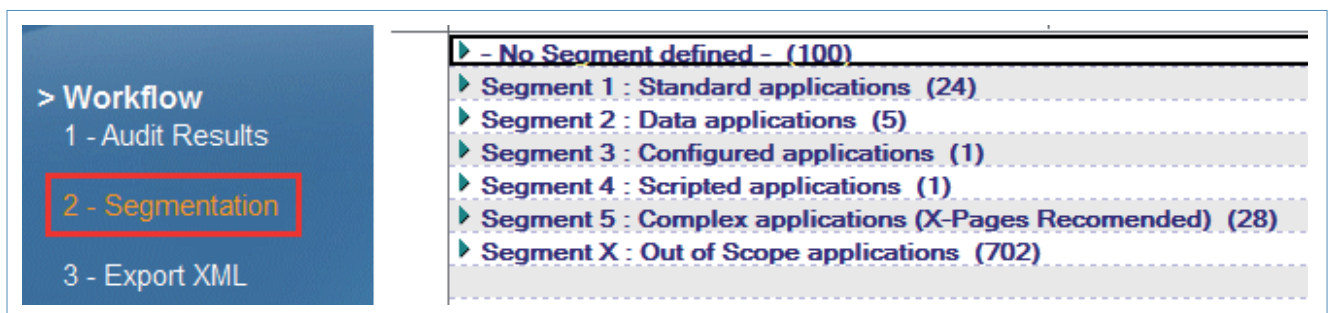
Then click on the Automatically button of the "Set Family" and "Data Model" :



STEP 3 Start using Application Dashboard™

From this point, you will find segmented databases in the Segmentation view :

Start using

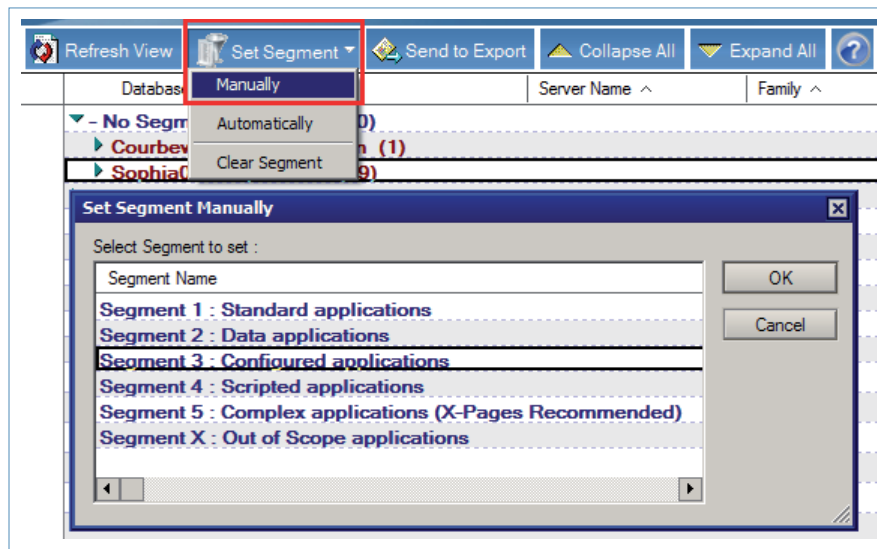


You can either manually or automatically segment the notes databases based on segmentation configuration documents (*definition, setup, rules*) to continue your project.

Manual

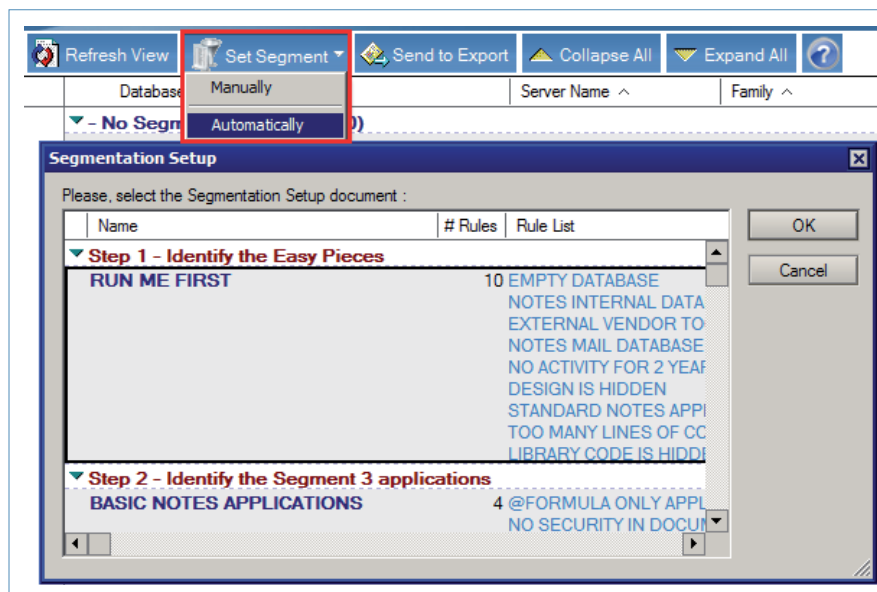
Samples :

To apply a Segment manually, you must choose one from the Definition List, as below :



Automatic

To apply the Segment Automatically, you should select an existing Segment Setup document from the list :



Summary
Diagram

